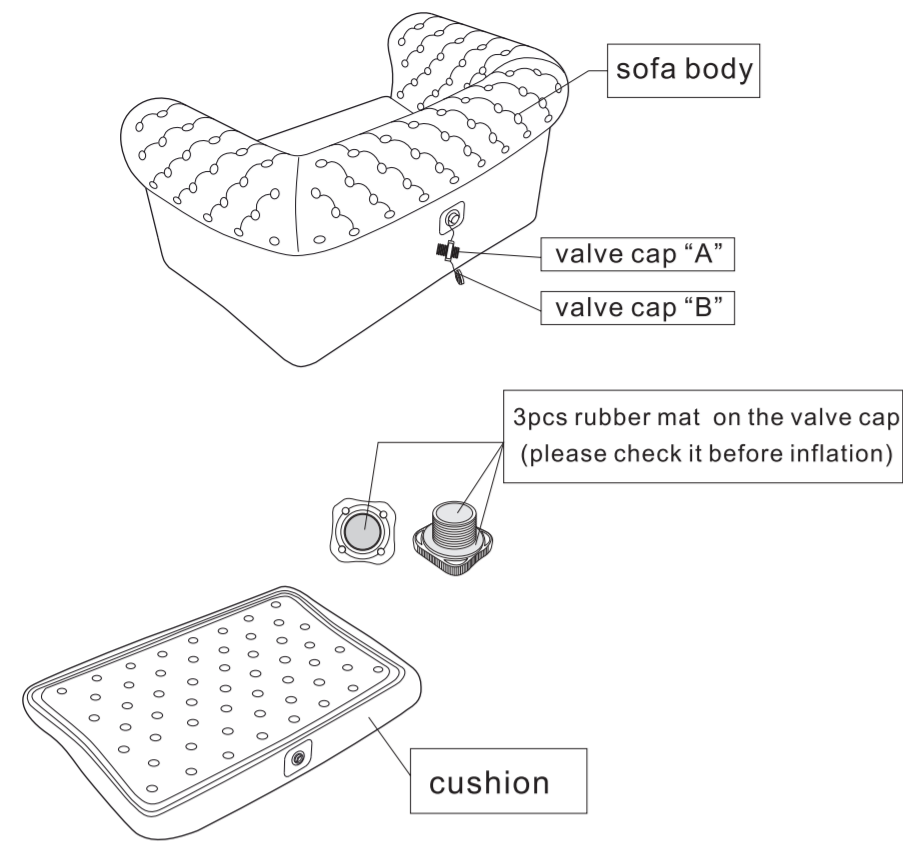
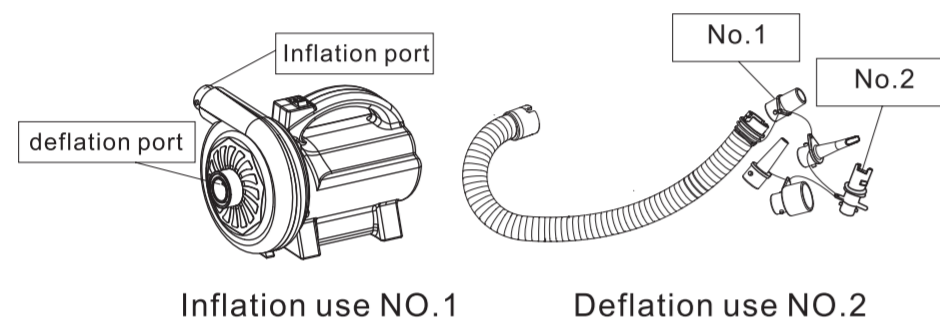


1. The following parts must be present: 1pcs sofa body, 1pcs cushion, 1 set repair kit



- 1.2 Optional item: 1pcs air pump (Item: HT-358)

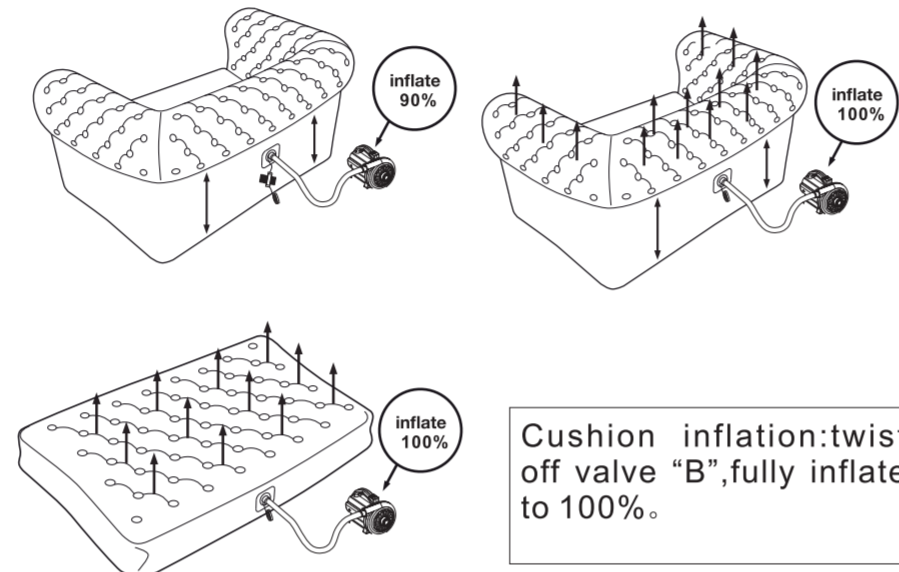


2. Reference Parameter:

- 2.1 Pressure value: 2-seater (5.0Kpa), 1-seater (4.5Kpa)
 2.2 Max Capacity weight: 2-seater (200KG), 1-seater (120KG)

3. Inflation :

- 3.1 Spread out the product on a plane area. Remember to check the surroundings for sharp items which can cause damage while inflating.
 3.2 Connect the hose to the pump, choose the right nozzle matching with valve. (Refer to 1.2)
 3.3 Inflate Sofa Body: Twist off the "A" cap from the valve, inflate sofa body to 90%, screw the "A" cap tightly. (Refer to 9.2); Then fully inflate this volume to 100%. (⚠ Notice: Do not overblow, otherwise there is risk to burst!!!), then twist on valve cap "B" tightly.

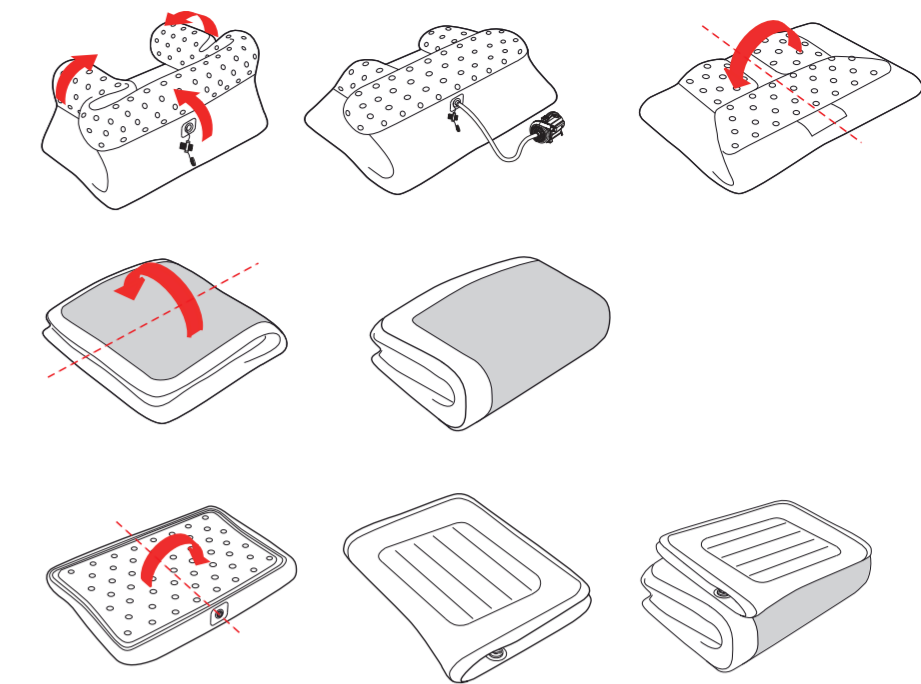


- 3.4 ⚠ When inflation, please do not leave sofa alone. Watch the volume to avoid over blow. Do not inflate sofa over rated pressure. (Refer to 2.1), otherwise, there is the risk to burst.
 3.5 When in or out a room in obvious temperature variation, do not inflate to 100% in room, to avoid any risk of burst causing by air expansion outside.
 3.7 If deflate or inflate too frequently, please don't inflate sofa to 100%, or it will affect the service life.
 3.8 Because the sofa is an inflatable product, it will only reach the optimal form sometime after having been inflated. After unpacking and inflating, the sofa might be a bit creased, because the sofa has been folded as compact as possible after production. If you partially deflate and then fully inflate the sofa for a few times over the course of the next hours, the creases will disappear.

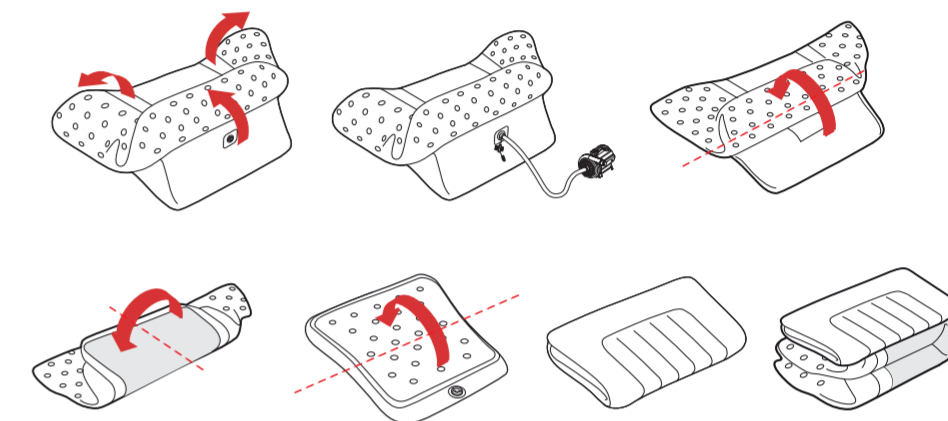
4. Deflation

- 4.1 Twist off the valve cap, open the valve to release air (You can use pump air-out function, refer to 1.2), then fold step by step as following.
 4.2 Push out the air by pressing the sofa, quickly close the valve to stop air in. Make sure the armrests will be put inwards, and backrest will be on top of it, this will make it easier to fold the sofa in right way. Fold the sofa, put in a bag or box.
 4.3 Place the sofa in a cool and dry place, avoiding in high temperature and wet environment.
 4.4 Fold sofa as shown in picture.

2-seater



1-seater



5. Patch Instruction:

- 5.1 It includes a set of repair kit (including 3pcs PVC patches, 1pcs glue)
 5.2 Use the reversed part of glue cap to impale the glue.
 5.3 Find the sofa leaking position, and glue surrounding. The gluing area is bigger than pvc patch. Then glue on pvc patch. When glue is dry, put and press the pvc patch onto leaking sofa position.

6. Warning:

- 6.1 This sofa is only used in leisure furniture, not designed to be used in water, or as a life-saving appliance.
 6.2 When using the sofa, place it in a safe environment and check this for sharp edges, stair steps or breakable objects. Only use on flat surface. Do not place the sofa near heating elements, cigarette end, open fire or other hot objects.
 6.3 Do not use a compressor to inflate sofa. Otherwise it will easily damage the sofa.
 6.4 To avoid the risk of injury, do not use the sofa for babies under 3 years old or persons with limited mobility, while they might roll off the sofa.
 6.5 Do not walk or jump on the sofa, or use it as a trampoline. This might cause person inquiries and shorten product life or puncture.
 6.6 Keep all the bags and the electrical devices away from children.
 6.7 Frequent inflation or deflation sofa will shorten its life.
 6.8 The pump is an electrical product, not a toy. To avoid the risk of injury, it is not allowed to play with the pump. Do not use the electrical pump near water and do not bring the pump in contact with water. Remove the plug from the socket when the pump is not being used. Make sure that your hands are dry when inserting the pump's plug in the socket. Do not use the pump near water. Do not attempt to disassemble, repair or service the pump. There are no

- parts in the pump that can be maintained by yourself.
 6.9 The chair can be cleaned by using water and soap. Do not use aggressive or chemical detergents.
 Make sure the product is completely dry before folding and storing it.
 6.10 Store the sofa at room temperature (over 10°C), in a clean and dry environment. If the sofa is stored in temperatures under 10°C, or over 40°C, this can affect its functioning, which will not be covered by the warranty.

7. Disclaimer :

In no event shall we be liable for any direct, indirect, punitive, incidental, special consequential damages or person injuries arising out of or connected with the misuse of its products. Please pay attention to avoid any accidents in use. The user assumes all risks of injury due to use.

8. Warranty:

We guarantee sofa to be free from material and workmanship defects for 7 days from the date of its purchase. If, during this period, the product proves defective due to improper materials or workmanship, which cannot be patched by repair-kit, please contact us. We will replace the sofa based on the terms and conditions set out below, providing the sofa has been used for purposes outlined in these manuals and operated according to all instructions provided. We reserve the right of refuse the warranty service if the below documents cannot be presented or if the information contained in them is incomplete or illegible.
 Condition: Please take photos on the basis of below,
 8.1 First please take clear photos of defect part on sofa. Our technical department will check it.

- 8.2 Under the confirmation with us in the range of defect issue, please take clear more photos as below steps.
 8.2.1 Take photo of Batch Number.
 8.2.2 Use a marking pen, mark a circle on the defect position of sofa, write Batch Number, Date of purchase and Date of defect you find.
 8.2.2.1 When taking photos of partial side, it should clearly show the defect position, batch number, date of purchase and date of defect you find.
 8.2.2.2 When taking photos of overall, it should clearly show the defect position in overall sofa. (It is suggested to inflate defect sofa before taking photos.)
 8.3 Send above three groups of photos to us, **when we confirm back**, please cut the back valve and send to us. We will send out new sofa.

9. Trouble shooting:

- 9.1 If you use the sofa for long periods of time, there is a possibility that the sofa will start losing pressure after a while. This is normal. The air pressure in the sofa fluctuates because temperature changes. You can use the pump to restore air pressure in the sofa.
 9.2 If the sofa is losing air (except for condition 9.1), check if the sofa has a leak hole; Small leak hole can be found by spraying the sofa with water. For repairing a leak, use provided repair-kit to patch it. (Refer to 5); if it has no leak hole, check if the rubber mat of the valve fall off (refer to 1.1); if no problem on rubber mat, please screw valve cap again; If it is not smooth, do not screw by force, check whether it get stuck or not.
 9.3 If the pump stops work suddenly; it may cause by over-time work, too hot to stop. Please stop running for 30 minutes, and switch on again. If it is still not on work, please contact us.

Inflatable chesterfield Sofa Instruction

